



## HEXCEL HEXFORCE FIBERGLASS E-GLASS PLAIN WEAVE STYLE 7532 F16 FINISH MODEL #: F-1023-50

### TYPE OF YARN

Warp Yarn: ECG 75 1/3 / EC9 68x3 (US System / SI Units)

Fill Yarn: ECG 75 1/3 / EC9 68x3 (US System / SI Units)

### FABRIC WEIGHT, DRY

7.25 oz/yd<sup>2</sup> / 246 g/m<sup>2</sup> (US System / SI Units)

### WEAVE STYLE:

Plain Weave

### NOMINAL CONSTRUCTION

Warp Count: 16/in / 6.29/cm (US System / SI Units)

Fill Count: 14/in / 5.51/cm (US System / SI Units)

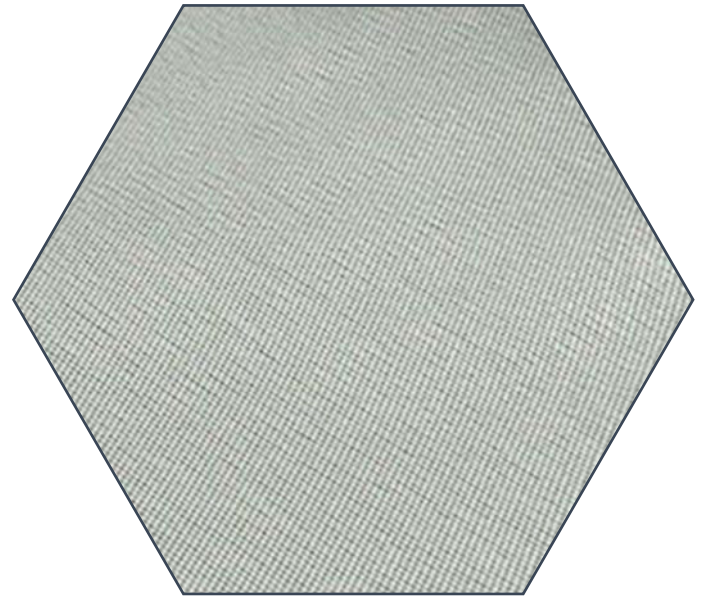
### FABRIC THICKNESS

10.00 mil / 0.25 mm (US System / SI Units)

### BREAKING STRENGTH

Warp: 300 lbf/in

Willing: 280 lbf/in



Information and data included in this data sheet is considered to be accurate and reliable to the best of our knowledge however it is not guaranteed to be so. It is the user/buyer's responsibility to determine for themselves the suitability of any material for a specific purpose and to adopt such safety precautions as may be necessary. Composite Envisions make no representations or warranties as to the results to be obtained in using any material. As Composite Envisions cannot foresee all conditions under which products will be used, user/buyer waives any claim against Composite Envisions for direct, indirect, consequential, or exemplary damages including without limitation, damage which may incur as a result of user/buyer's use or misuse of the product or the product's failure to perform to any expected performance level.

Composite Envisions LLC  
8450 Development Court  
Wausau, WI 54401 USA  
+1 715-842-0101  
info@compositeenvisions.com  
<https://compositeenvisions.com/>



# COMPOSITE ENVISIONS