

Data Sheet

GREENFLOW 75

High performance, low profile resin distribution medium

DESCRIPTION

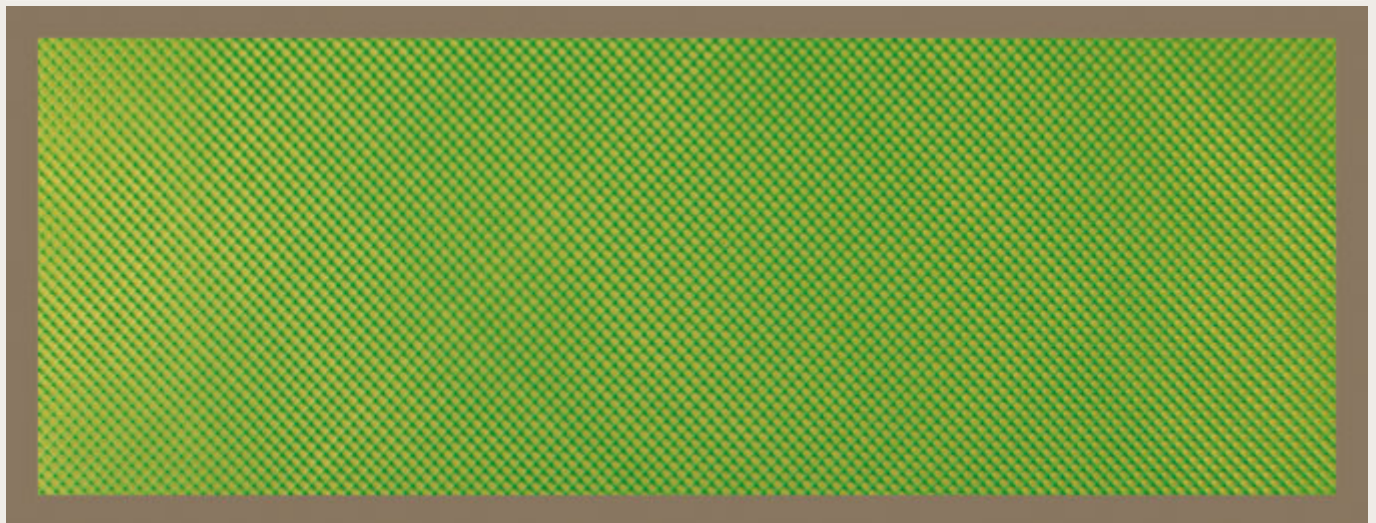
Greenflow 75 is designed to efficiently distribute resin with little waste due to the low profile, tight construction. Greenflow 75 can be used with polyester, vinylester and epoxy resins.

TECHNICAL DATA

Material type	Polypropylene
Color	Green
Configuration of net	Extruded (Rhombic)
Maximum use temperature	302°F (150°C)
Melt point	320 °F (161 °C)
Mesh weight	98 g/m ²
Shelf life	Unlimited when stored in original packaging at 72°F (22°C)

SIZES

Thickness	Width	Length
0.03 in (0.9 mm)	41 in (1.04 m)	350 ft (106.7 m)
0.03 in (0.9 mm)	60 in (1.5 m)	350 ft (106.7 m)



NOTES

- This product is an extruded mesh and does not fray when cut.
- The maximum use temperature is dependent upon the duration at maximum temperature and is process specific, Airtech recommends testing prior to use.

Last updated : 2019-04-23

Catalog position : [Resin infusion products](#)